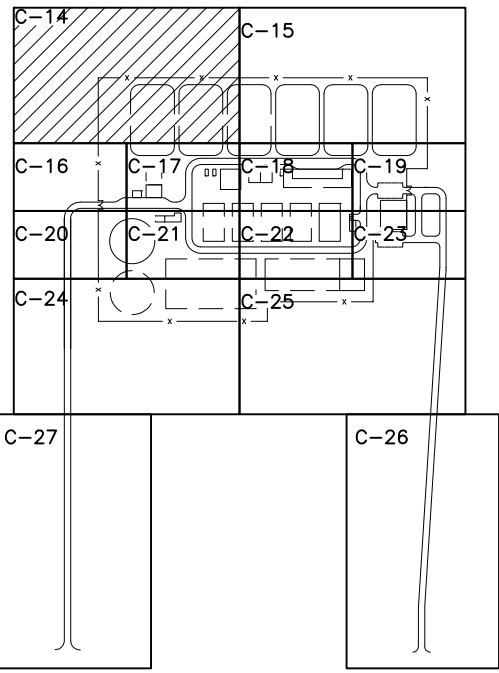
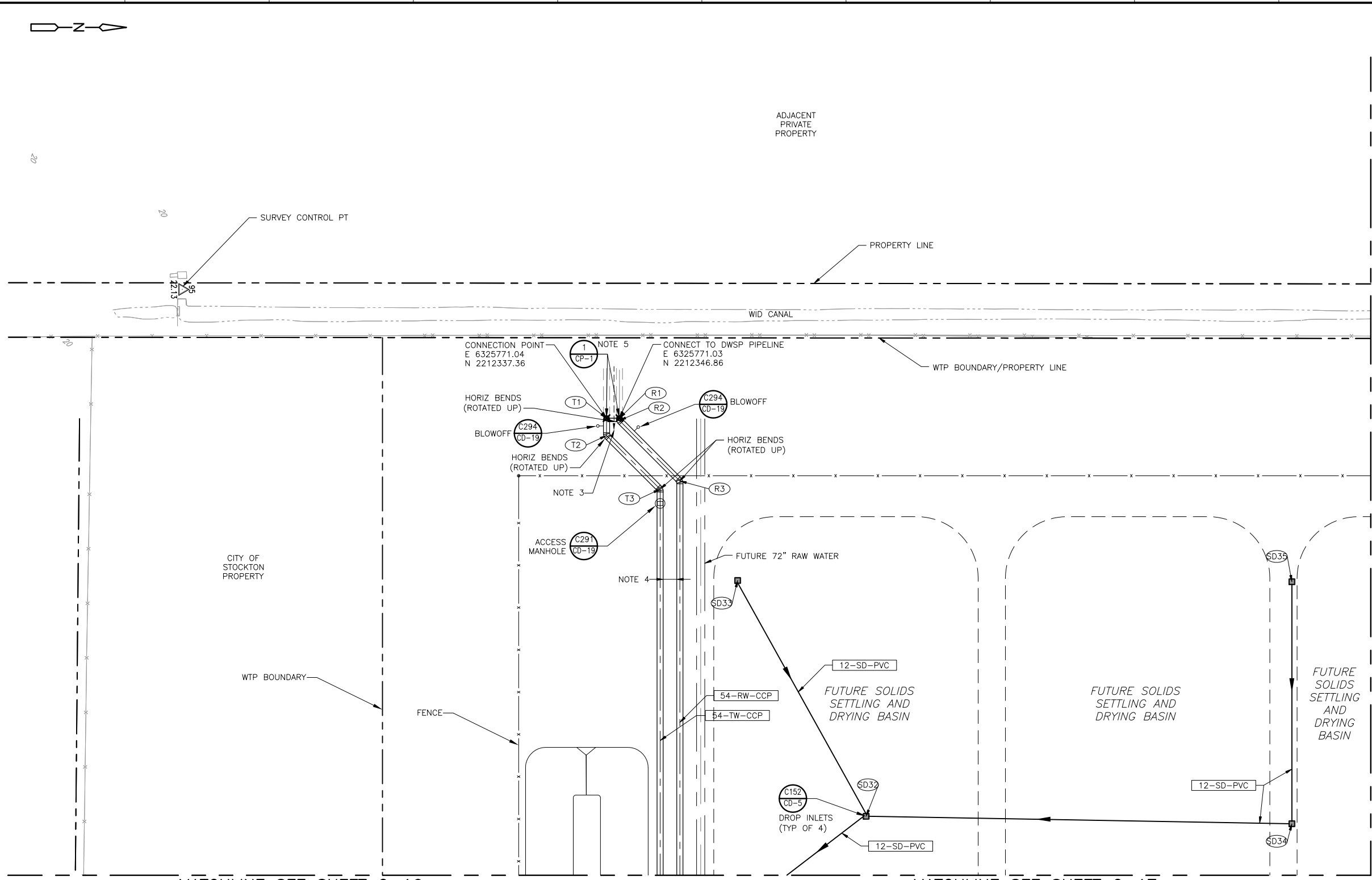
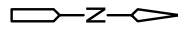


©2012 CDM SMITH ALL RIGHTS RESERVED. THESE DOCUMENTS AND DESIGNS PROVIDED BY PROFESSIONAL SERVICE, INCORPORATED HEREIN, ARE THE PROPERTY OF CDM SMITH AND ARE NOT TO BE USED, IN WHOLE OR PART, FOR ANY OTHER PROJECT WITHOUT THE WRITTEN AUTHORIZATION OF CDM SMITH. REUSE OF DOCUMENTS: THESE DOCUMENTS ARE THE PROPERTY OF CDM SMITH AND ARE NOT TO BE USED, IN WHOLE OR PART, FOR ANY OTHER PROJECT WITHOUT THE WRITTEN AUTHORIZATION OF CDM SMITH.

A B C D E F G H I J K L



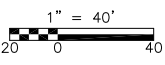
KEY MAP
NTS

- NOTES:
- FOR PIPE INVERT CALLOUTS, (EX. SD37), AND X-Y COORDINATES AT FITTING AND CONNECTIONS, SEE TABLES ON C-29 AND C-30.
 - FOR ALL STORM DRAIN (SD) AND SANITARY SEWER (SS) DRAIN PIPING, PROVIDE AT LEAST ONE PIPE JOINT WITHIN FIVE FEET OF ENTERING OR EXITING ALL STRUCTURES AND BUILDINGS, INCLUDING CAST-IN-PLACE OR PRECAST INLETS, CATCH BASINS, AND MANHOLES.
 - SLURRY WALL SEPARATING THE RW AND TW PROVIDED UNDER DWSP PIPELINE PROJECT SHALL BE EXTENDED FROM THE CONNECTION POINT TO WHERE THE RW/TW SEPARATION IS 10 FT. SEE DETAIL 1/CD-15.
 - CONTRACTOR SHALL MAINTAIN A MINIMUM 10-FT SEPARATION. PIPELINES SHALL BE CONSTRUCTED IN SEPARATE TRENCHES.
 - INSULATING JOINTS SHALL BE INSTALLED ONLY AFTER THE WTP AND THE DWSP PIPELINES ARE IN PLACE.

MATCHLINE SEE SHEET C-15

MATCHLINE SEE SHEET C-16

MATCHLINE SEE SHEET C-17



CDM Smith RECORD DRAWINGS

DESIGNED BY: J. NISHIMOTO
 DRAWN BY: R. UCHIMURA
 SHEET CHK'D BY: G. LINDSTADT
 CROSS CHK'D BY: J. NISHIMOTO
 APPROVED BY: C. LINDSTADT
 DATE: MARCH 2010

DATE: 9/2012

CDM Smith
 One Walnut Creek Center
 100 Pringle Ave, Suite 300
 Walnut Creek, CA 94596
 Tel: (925) 933-2900

DEPARTMENT OF MUNICIPAL UTILITIES
 CITY OF STOCKTON, CALIFORNIA

APVD: [Signature]
 BY: [Signature] DATE: 9/2012

ENGINEERING MANAGER,
 DEPARTMENT OF MUNICIPAL UTILITIES

0 1/2 1

IF THIS BAR DOES NOT MEASURE 1" THEN ADJUST SCALE ACCORDINGLY

REGISTERED PROFESSIONAL ENGINEER
 GREGORY LAWRENCE LINDSTADT
 No. C 44050
 Exp. 6/30/2011
 CIVIL
 STATE OF CALIFORNIA

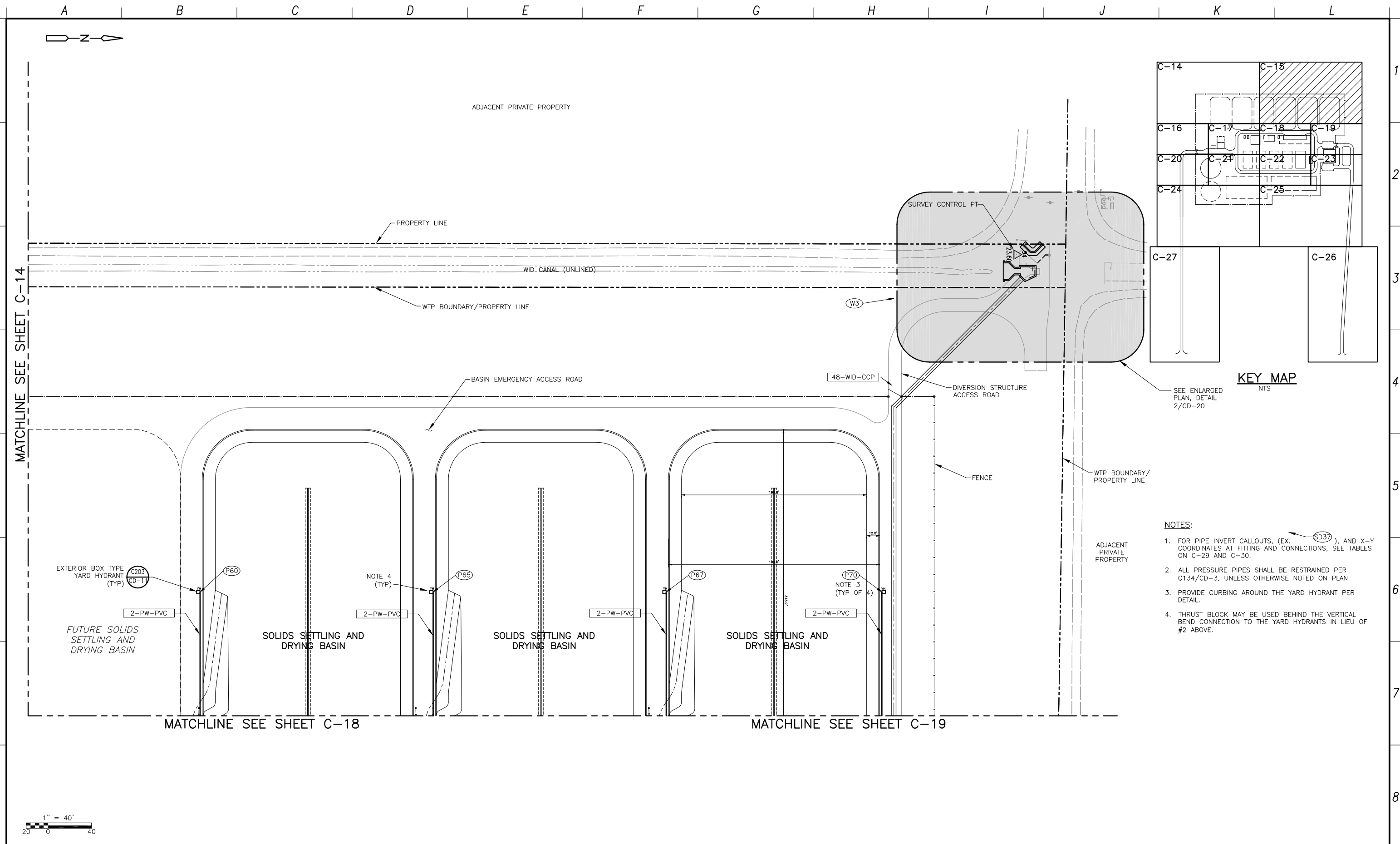
Delta Water Supply Project
 CITY OF STOCKTON

DWSP
 WATER TREATMENT
 PLANT

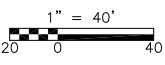
YARD PIPING PLAN
 (1 OF 12)

PROJECT NO. 5000-61732
 FILE NAME: 61732S00C014
 SHEET NO.
C-14

©2012 CDM SMITH ALL RIGHTS RESERVED. THESE DOCUMENTS AND DESIGNS PROVIDED BY PROFESSIONAL SERVICE, INCORPORATED HEREIN, ARE THE PROPERTY OF CDM SMITH AND ARE NOT TO BE USED, IN WHOLE OR PART, FOR ANY OTHER PROJECT WITHOUT THE WRITTEN AUTHORIZATION OF CDM SMITH.
 REUSE OF DOCUMENTS: THESE DOCUMENTS ARE THE PROPERTY OF CDM SMITH AND ARE NOT TO BE USED, IN WHOLE OR PART, FOR ANY OTHER PROJECT WITHOUT THE WRITTEN AUTHORIZATION OF CDM SMITH.
 PROJECT NO. 5000-61732
 SHEET NO. 01-Record Drawings
 DATE: 09/19/12
 DRAWN BY: R. UCHIMURA
 SHEET CHECKED BY: G. LINDSTADT
 CROSS CHECKED BY: J. NISHIMOTO
 APPROVED BY: C. LINDSTADT
 DATE: MARCH 2010



- NOTES:**
- FOR PIPE INVERT CALLOUTS, (EX. SD37), AND X-Y COORDINATES AT FITTING AND CONNECTIONS, SEE TABLES ON C-29 AND C-30.
 - ALL PRESSURE PIPES SHALL BE RESTRAINED PER C134/CD-3, UNLESS OTHERWISE NOTED ON PLAN.
 - PROVIDE CURBING AROUND THE YARD HYDRANT PER DETAIL.
 - THRUST BLOCK MAY BE USED BEHIND THE VERTICAL BEND CONNECTION TO THE YARD HYDRANTS IN LIEU OF #2 ABOVE.



CDM Smith

RECORD DRAWINGS

BY: *[Signature]* DATE: 9/2012

DESIGNED BY: J. NISHIMOTO
 DRAWN BY: R. UCHIMURA
 SHEET CHK'D BY: G. LINDSTADT
 CROSS CHK'D BY: J. NISHIMOTO
 APPROVED BY: C. LINDSTADT
 DATE: MARCH 2010

CDM Smith

One Walnut Creek Center
 100 Pringle Ave, Suite 300
 Walnut Creek, CA 94596
 Tel: (925) 933-2900

DEPARTMENT OF MUNICIPAL UTILITIES
 CITY OF STOCKTON, CALIFORNIA

APVD: *[Signature]* DATE: 9/2012
 BY: *[Signature]*
 ENGINEERING MANAGER,
 DEPARTMENT OF MUNICIPAL UTILITIES

0 1/2 1

IF THIS BAR DOES NOT MEASURE 1" THEN ADJUST SCALE ACCORDINGLY



**DWSP
 WATER TREATMENT
 PLANT**

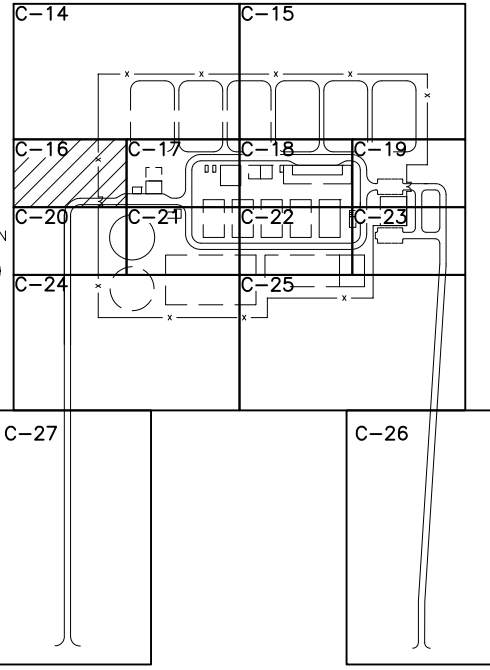
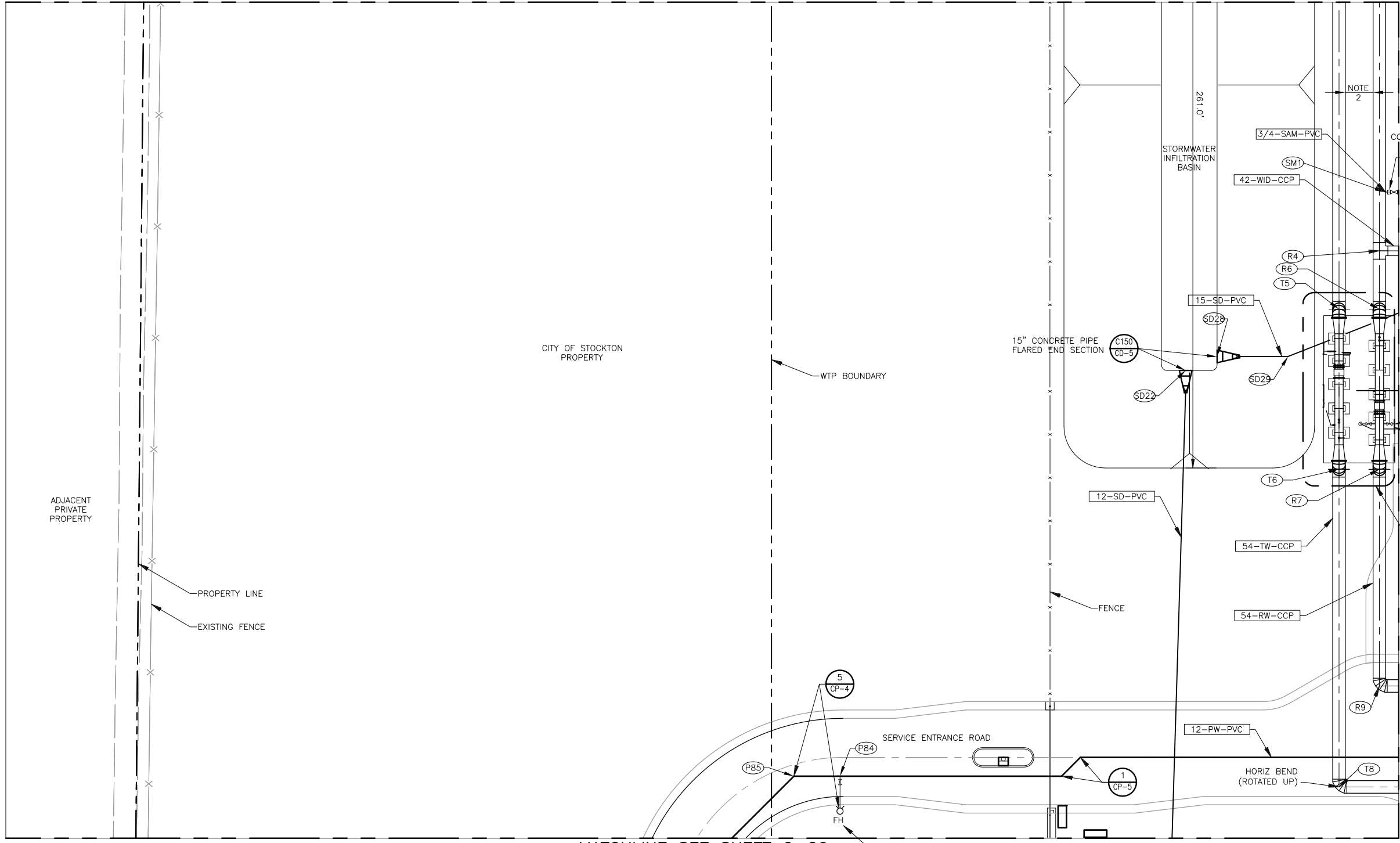
**YARD PIPING PLAN
 (2 OF 12)**

PROJECT NO. 5000-61732
 FILE NAME: 61732S00C015
 SHEET NO.
C-15

©2012 CDM SMITH ALL RIGHTS RESERVED. THESE DOCUMENTS AND DESIGNS PROVIDED BY PROFESSIONAL SERVICE, INCORPORATED HEREIN, ARE THE PROPERTY OF CDM SMITH AND ARE NOT TO BE USED, IN WHOLE OR PART, FOR ANY OTHER PROJECT WITHOUT THE WRITTEN AUTHORIZATION OF CDM SMITH. REUSE OF DOCUMENTS: THESE DOCUMENTS ARE THE PROPERTY OF CDM SMITH AND ARE NOT TO BE USED, IN WHOLE OR PART, FOR ANY OTHER PROJECT WITHOUT THE WRITTEN AUTHORIZATION OF CDM SMITH.

A B C D E F G H I J K L

MATCHLINE SEE SHEET C-14



KEY MAP
NTS

- 1(4)-AA-PVC
- 1-SPARE-PVC
- 1(4)-OCL-PVC
- 1-SPARE-PVC

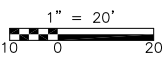
A
CD-10
DELTA RAW AND TREATED WATER PLANT FLOW METERS

NOTES:

1. FOR PIPE INVERT CALLOUTS, (EX. SD37), AND X-Y COORDINATES AT FITTINGS AND CONNECTIONS, SEE TABLES ON C-29 AND C-30.
2. CONTRACTOR SHALL MAINTAIN A MINIMUM 10-FT SEPARATION. PIPELINES SHALL BE CONSTRUCTED IN SEPARATE TRENCHES.
3. FIELD LOCATE MONITORING TEST BOARD NEAR TEE, OR BEHIND ROADWAY AGGREGATE STRIP.
4. ALL PRESSURE PIPE SHALL BE RESTRAINED PER C134/CD-3.
5. FOR ALL STORM DRAIN (SD) AND SANITARY SEWER (SS) PIPING, PROVIDE AT LEAST ONE PIPE JOINT WITHIN 5 FT OF ENTERING OR EXITING ALL STRUCTURES AND BUILDINGS, INCLUDING CAST-IN-PLACE OR PRECAST INLETS, CATCH BASINS, AND MANHOLES.
6. FOR ALL PIPING EXCEPT STORM DRAIN (SD) AND SANITARY SEWER (SS), PROVIDE TWO FLEXIBLE COUPLINGS ENTERING OR EXITING ALL STRUCTURES OR BUILDINGS, EXCEPT WHERE PASSING THROUGH PRECAST STRUCTURES OR CONNECTING TO BASINS, EVEN IF NOT SHOWN ON THE PLAN. SEE DETAIL C161/CD-6.

MATCHLINE SEE SHEET C-20

MATCHLINE SEE SHEET C-17



CDM Smith RECORD DRAWINGS

DESIGNED BY: J. NISHIMOTO
 DRAWN BY: R. UCHIMURA
 SHEET CHK'D BY: G. LINDSTADT
 CROSS CHK'D BY: J. NISHIMOTO
 APPROVED BY: G. LINDSTADT
 DATE: MAY 2010

DATE: 9/2012

CDM Smith
 One Walnut Creek Center
 100 Pringle Ave, Suite 300
 Walnut Creek, CA 94596
 Tel: (925) 933-2900

DEPARTMENT OF MUNICIPAL UTILITIES
 CITY OF STOCKTON, CALIFORNIA

APVD: *[Signature]* DATE: 9/2012
 BY: *[Signature]*
 ENGINEERING MANAGER,
 DEPARTMENT OF MUNICIPAL UTILITIES

0 1/2 1

IF THIS BAR DOES NOT MEASURE 1" THEN ADJUST SCALE ACCORDINGLY

REGISTERED PROFESSIONAL ENGINEER
 CREGORY LAWRENCE LINDSEY
 No. C 44050
 Exp. 6/30/2011
 CIVIL
 STATE OF CALIFORNIA

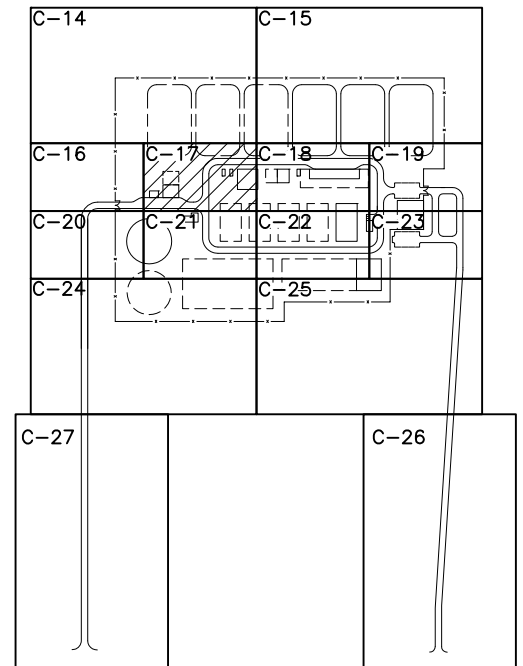
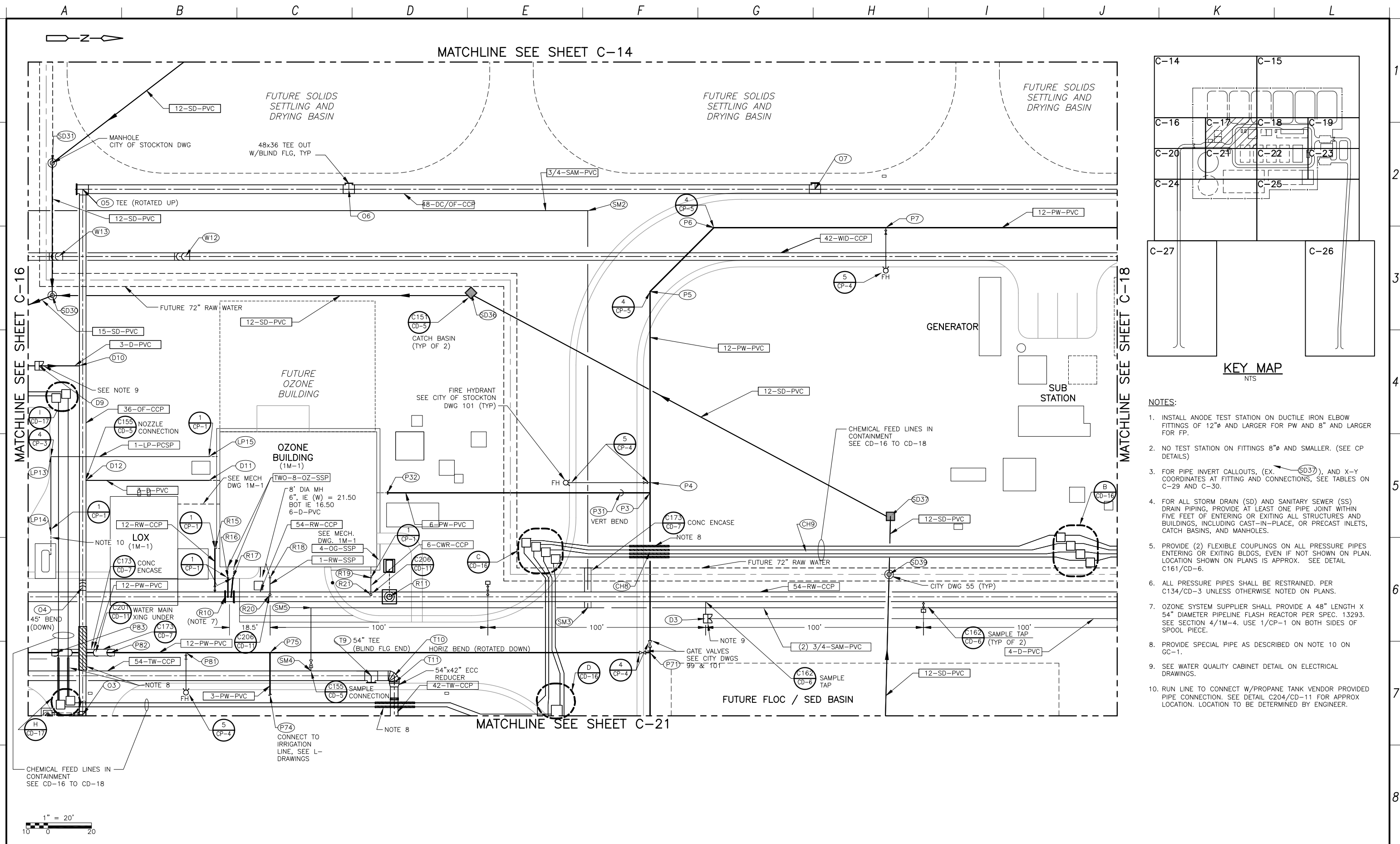
Delta Water Supply Project
 CITY OF STOCKTON

DWSP
 WATER TREATMENT PLANT

YARD PIPING PLAN
 (3 OF 12)

PROJECT NO. 5000-61732
 FILE NAME: 61732S00C016
 SHEET NO.
C-16

©2012 CDM SMITH ALL RIGHTS RESERVED. REUSE OF DOCUMENTS: THESE DOCUMENTS AND DESIGNS PROVIDED BY PROFESSIONAL SERVICE, INCORPORATED HEREIN, ARE THE PROPERTY OF CDM SMITH AND ARE NOT TO BE USED, IN WHOLE OR PART, FOR ANY OTHER PROJECT WITHOUT THE WRITTEN AUTHORIZATION OF CDM SMITH.

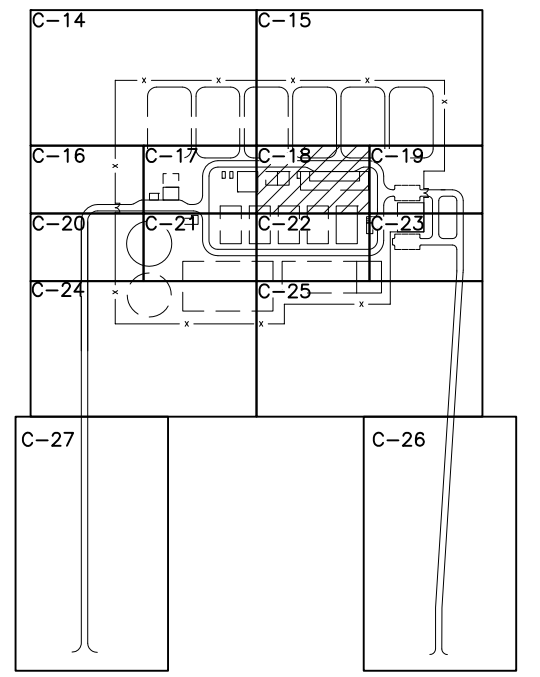
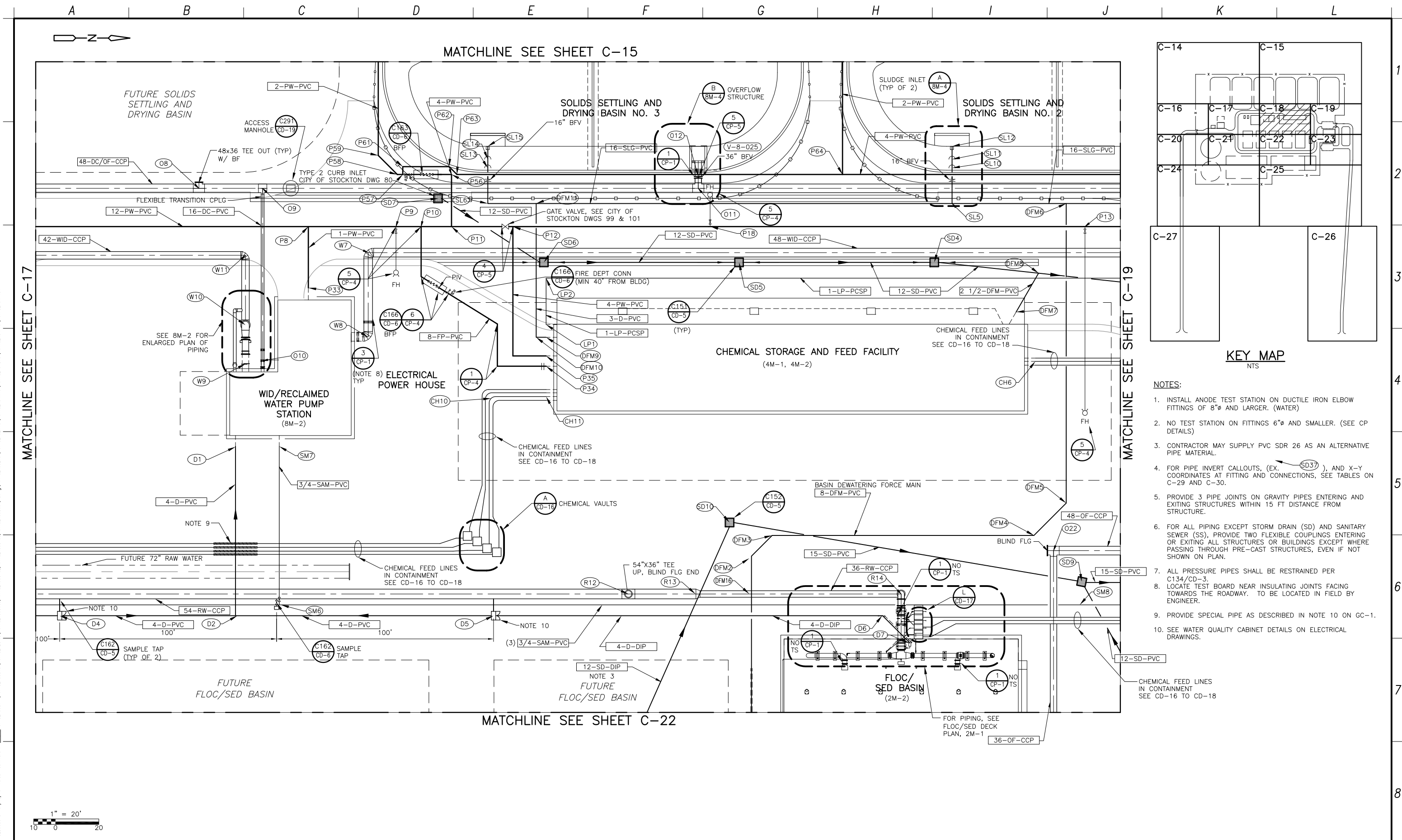


KEY MAP
NTS

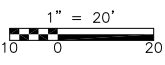
- NOTES:**
- INSTALL ANODE TEST STATION ON DUCTILE IRON ELBOW FITTINGS OF 12" AND LARGER FOR PW AND 8" AND LARGER FOR FP.
 - NO TEST STATION ON FITTINGS 8" AND SMALLER. (SEE CP DETAILS)
 - FOR PIPE INVERT CALLOUTS, (EX. SD37), AND X-Y COORDINATES AT FITTING AND CONNECTIONS, SEE TABLES ON C-29 AND C-30.
 - FOR ALL STORM DRAIN (SD) AND SANITARY SEWER (SS) DRAIN PIPING, PROVIDE AT LEAST ONE PIPE JOINT WITHIN FIVE FEET OF ENTERING OR EXITING ALL STRUCTURES AND BUILDINGS, INCLUDING CAST-IN-PLACE, OR PRECAST INLETS, CATCH BASINS, AND MANHOLES.
 - PROVIDE (2) FLEXIBLE COUPLINGS ON ALL PRESSURE PIPES ENTERING OR EXITING BLDGS, EVEN IF NOT SHOWN ON PLAN. LOCATION SHOWN ON PLANS IS APPROX. SEE DETAIL C161/CD-6.
 - ALL PRESSURE PIPES SHALL BE RESTRAINED. PER C134/CD-3 UNLESS OTHERWISE NOTED ON PLANS.
 - OZONE SYSTEM SUPPLIER SHALL PROVIDE A 48" LENGTH X 54" DIAMETER PIPELINE FLASH REACTOR PER SPEC. 13293. SEE SECTION 4/1M-4. USE 1/CP-1 ON BOTH SIDES OF SPOOL PIECE.
 - PROVIDE SPECIAL PIPE AS DESCRIBED ON NOTE 10 ON GC-1.
 - SEE WATER QUALITY CABINET DETAIL ON ELECTRICAL DRAWINGS.
 - RUN LINE TO CONNECT W/PROPANE TANK VENDOR PROVIDED PIPE CONNECTION. SEE DETAIL C204/CD-11 FOR APPROX LOCATION. LOCATION TO BE DETERMINED BY ENGINEER.

	RECORD DRAWINGS DESIGNED BY: J. NISHIMOTO DRAWN BY: R. UCHIMURA SHEET CHK'D BY: G. LINDSTADT CROSS CHK'D BY: J. NISHIMOTO APPROVED BY: G. LINDSTADT DATE: MARCH 2010		DEPARTMENT OF MUNICIPAL UTILITIES CITY OF STOCKTON, CALIFORNIA APVD: BY: DATE: 9/2012 ENGINEERING MANAGER DEPARTMENT OF MUNICIPAL UTILITIES	0 1/2 1 IF THIS BAR DOES NOT MEASURE 1" THEN ADJUST SCALE ACCORDINGLY		 DWSP WATER TREATMENT PLANT	YARD PIPING PLAN (4 OF 12)	PROJECT NO. 5000-61732 FILE NAME: 61732S00C017 SHEET NO. C-17
--	---	--	---	--	--	---	---------------------------------------	---

©2012 CDM SMITH ALL RIGHTS RESERVED. REUSE OF DOCUMENTS: THESE DOCUMENTS AND DESIGNS PROVIDED BY PROFESSIONAL SERVICE, INCORPORATED HEREIN, ARE THE PROPERTY OF CDM SMITH AND ARE NOT TO BE USED, IN WHOLE OR PART, FOR ANY OTHER PROJECT WITHOUT THE WRITTEN AUTHORIZATION OF CDM SMITH.



- NOTES:**
- INSTALL ANODE TEST STATION ON DUCTILE IRON ELBOW FITTINGS OF 8" AND LARGER. (WATER)
 - NO TEST STATION ON FITTINGS 6" AND SMALLER. (SEE CP DETAILS)
 - CONTRACTOR MAY SUPPLY PVC SDR 26 AS AN ALTERNATIVE PIPE MATERIAL.
 - FOR PIPE INVERT CALLOUTS, (EX. SD37), AND X-Y COORDINATES AT FITTING AND CONNECTIONS, SEE TABLES ON C-29 AND C-30.
 - PROVIDE 3 PIPE JOINTS ON GRAVITY PIPES ENTERING AND EXITING STRUCTURES WITHIN 15 FT DISTANCE FROM STRUCTURE.
 - FOR ALL PIPING EXCEPT STORM DRAIN (SD) AND SANITARY SEWER (SS), PROVIDE TWO FLEXIBLE COUPLINGS ENTERING OR EXITING ALL STRUCTURES OR BUILDINGS EXCEPT WHERE PASSING THROUGH PRE-CAST STRUCTURES, EVEN IF NOT SHOWN ON PLAN.
 - ALL PRESSURE PIPES SHALL BE RESTRAINED PER C134/CD-3.
 - LOCATE TEST BOARD NEAR INSULATING JOINTS FACING TOWARDS THE ROADWAY. TO BE LOCATED IN FIELD BY ENGINEER.
 - PROVIDE SPECIAL PIPE AS DESCRIBED IN NOTE 10 ON GC-1.
 - SEE WATER QUALITY CABINET DETAILS ON ELECTRICAL DRAWINGS.



CDM Smith

RECORD DRAWINGS

DESIGNED BY: J. NISHIMOTO
 DRAWN BY: R. UCHIMURA
 SHEET CHK'D BY: G. LINDSTADT
 CROSS CHK'D BY: J. NISHIMOTO
 APPROVED BY: C. LINDSTADT
 DATE: MARCH 2010

DATE: 9/2012

CDM Smith

One Walnut Creek Center
 100 Pringle Ave, Suite 300
 Walnut Creek, CA 94596
 Tel: (925) 933-2900

DEPARTMENT OF MUNICIPAL UTILITIES
 CITY OF STOCKTON, CALIFORNIA

APVD: [Signature]
 DATE: 9/2012

ENGINEERING MANAGER,
 DEPARTMENT OF MUNICIPAL UTILITIES

0 1/2 1

IF THIS BAR DOES NOT MEASURE 1" THEN ADJUST SCALE ACCORDINGLY

Delta Water Supply Project

CITY OF STOCKTON

REGISTERED PROFESSIONAL ENGINEER
 GREGORY LAWRENCE LINDVOLD
 No. C 44050
 Exp. 6/30/2011
 CIVIL
 STATE OF CALIFORNIA

DWSP WATER TREATMENT PLANT

YARD PIPING PLAN (5 OF 12)

SHEET NO. **C-18**

PROJECT NO. 5000-61732
 FILE NAME: 61732S00C018